



The
Australian
Ballet

A TOUR FOR PATRONS AND SUPPORTERS
OF THE AUSTRALIAN BALLET



Renaissance
Tours

Ballet and the Arts in New Zealand



Tour Leader:
Susanne Sweetland

04 – 13 June 2010
(10 days)

Looking for a 'ballet break' close to home? Then join Sue Sweetland across the Tasman for the Royal New Zealand Ballet's premiere production of 2010 *Carmen*, combined with performances by the NBR New Zealand Opera and the New Zealand Symphony Orchestra.

Carmen's allure is the stuff of legend. Sizzlingly seductive, few can resist her charms.

An electrifying contemporary ballet, set in modern day Rio de Janeiro, *Carmen* is guaranteed to set pulses racing.

This stylish, sensuous production featuring Didy Veldman's powerful choreography has been hailed as "brilliant dance theatre" and a "raunchy and fast-paced production not to be missed".

In addition to *Carmen* you will also discover New Zealand's national opera company and symphony orchestra and explore the beautiful North Island.

Start in Auckland and a visit to Waiheke Island, a picturesque blend of farmland, forest, beaches, vineyards and olive groves. Departing Auckland travel south and see some of the best the North Island has to offer: the beautiful Coromandel Peninsula, the geothermal city of Rotorua, the Art Deco city of Napier and the capital, Wellington.

Marvel at the stunning scenery and enjoy superb New Zealand hospitality, cuisine and wines throughout.



Susanne Sweetland

Sue Sweetland is well known to the Patrons and supporters of The Australian Ballet. She joined the Company in 1996 and worked in the corporate sponsorship area and later spent 6 years as National Manager Private Giving.

Since retiring from The Australian Ballet, Sue has maintained her involvement with the arts and is now mentoring in the philanthropy area of the Arts including the West Australian Ballet. She is also fundraising with the Prahran City Mission in Melbourne.

Sue has led a number of very successful Australian Ballet and Dancers' Company tours including The Nutcracker in the Outback, The Dancers' Company in Queensland, The Australian Ballet in Japan and The Dancers' Company in the Top End.



COROMANDEL PENINSULA | COURTESY TNZ | PHOTO: ERIN BAINO

ITINERARY

FRIDAY 04 JUNE 2010 SYD / MEL – AUCKLAND

Arrive Auckland and check-in to the hotel. Auckland, also known as 'The City of Sails', sprawls over a narrow isthmus between the sparkling waters of the Waitemata and Manukau Harbours. A cloak of rainforest covers the surrounding hills, dozens of dormant volcanic cones dot the landscape and enchanting islands are scattered throughout the vast Hauraki Gulf. Auckland's heart beats to a Polynesian rhythm, its people a melting pot of South Pacific and Asian cultures and a strong indigenous Maori heritage.

Tonight, join Sue Sweetland and fellow ballet lovers for a welcome dinner. (D)

SATURDAY 05 JUNE AUCKLAND

Excursion to Waiheke Island. Located twelve miles from the bustling centre of Auckland City lies the beautiful, tranquil island of Waiheke. The name means "cascading waters" in Maori – waters which fostered a land of plenty for the original inhabitants. Waiheke Island is a picturesque blend of farmland, forest, beaches, vineyards and olive groves. On a tour of the island, marvel at its natural beauty, visit an art gallery and enjoy lunch and wine-tasting at a vineyard. Afternoon return to Auckland by ferry.

Tonight attend a performance of the NBR New Zealand Opera of *The Marriage of Figaro* at the Aotea Centre. In this brand new production New Zealand bass Wade Kernot sings Figaro, with celebrated Italian soprano Nuccia Focile as the Countess. Aidan Lang will make his NZ directing debut and renowned opera and orchestral conductor Lionel Friend will take the baton. (BL)

THE NBR NEW ZEALAND OPERA

The NBR New Zealand Opera is New Zealand's largest professional opera company. The company was formed in 2000 when the Wellington City Opera (1892–1999) and Auckland Opera (1970–2000) companies decided to merge into one organisation. The company produces three fully staged operas each year during an annual season.

For further information, visit www.nzopera.com

SUNDAY 06 JUNE AUCKLAND – COROMANDEL PENINSULA

After breakfast, depart Auckland and travel south to the Coromandel Peninsula, a beautiful rugged area fringed with dozens of excellent beaches that separate the Pacific Ocean from the Hauraki Gulf. It is a place where many kiwis choose to escape the hustle and hype of city life and is home to many arts and crafts people who seek an alternative lifestyle. At the quaint township of Coromandel, we ride the Driving Creek narrow gauge railway to a fascinating artist colony before crossing the divide to the eastern side of the peninsula for our overnight stay in Pauanui. (BD)

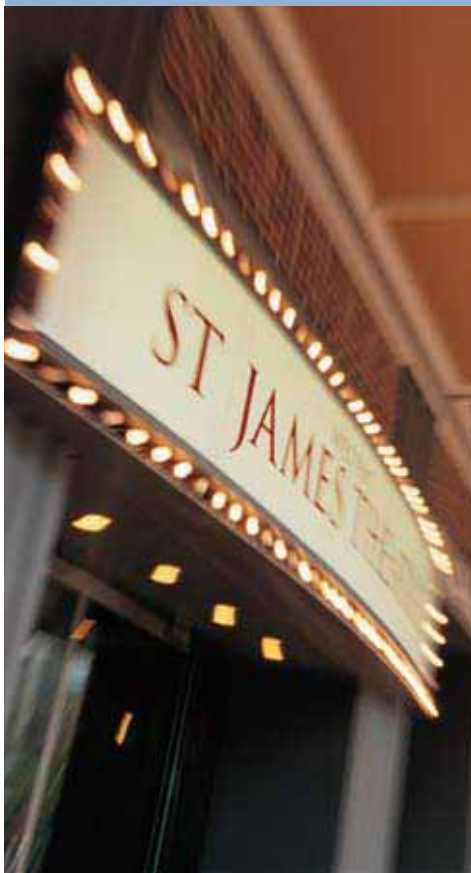
MONDAY 07 JUNE COROMANDEL PENINSULA – ROTORUA

Journey along the Bay of Plenty coastline to Tauranga and Mt Maunganui before heading inland across the volcanic plateau to the geothermal city of Rotorua, passing many of the regions crystal clear lakes en-route. Rotorua's raw beauty has enchanted visitors from around the world for more than 160 years. This evening, enjoy a twilight cruise across Lake Rotoiti to the natural thermal springs of Manupirua Pools. (BD)

TUESDAY 08 JUNE ROTORUA

Today experience the scenic beauty of Rotorua's lakes and learn about the history and culture of Rotorua and the devastation caused by the eruption of Mount Tarawera in 1886. See five of Rotorua's surrounding lakes including a view to Mount Tarawera across Lake Tarawera. Wander around the famous buried village of Te Wairoa.

WELLINGTON CABLE CAR | IAN TRAFFORD





WELLINGTON HARBOURK



ART DECO CITY OF NAPIER | COURTESY TNZ | PHOTO: CHRIS MCLENNAN

Finish with a guided tour through the award winning Rotorua Museum. View fascinating exhibits showcasing Rotorua's vibrant volcanic and cultural history included in a short film of the history of Rotorua. Afternoon at leisure (B)

**WEDNESDAY 09 JUNE
ROTORUA – LAKE TAUPO – NAPIER**

This morning, visit Wai-O-Tapu (meaning 'Sacred Waters'), a wonderland of geothermal activity. Marvel at the reserve's unique features that include the world famous Champagne Pool, geysers, bubbling mud pools, steaming ground and sinter terrace formations. On the way to Lake Taupo, itself a gigantic volcanic crater following an enormous explosion in AD183, stop to view the mighty Huka Falls and Wairakei Geothermal Project and take time to walk around this popular lakeside resort. Journey on to Napier, widely regarded as the 'Art Deco Capital of the World', the result of a thorough rebuilding after a massive earthquake in 1931. Nowhere else can you see as wide a variety of 1930's-style buildings in such a concentrated area, including Striped Classical, Spanish Mission and above all, Art Deco. Your local guide will bring this fascinating architecture to life on a guided walk around the town this afternoon. (BD)

**THURSDAY 10 JUNE
NAPIER – WELLINGTON**

Today travel to the capital of New Zealand. Stop in the quaint Greytown, a living historical village with many boutique stores and galleries, before continuing to Martinborough. The area around the village of Martinborough is now a grape-

growing and wine-making region, producing a high quality range of wines, particularly Pinot Noir. On a tour of Martinborough's celebrated wine region, see behind the scenes, meeting the wine and boutique food producers and finishing with a 'tasting' lunch. Arrive in Wellington late in the afternoon. (BL)

FRIDAY 11 JUNE WELLINGTON

Embark on a 'Day with the Royal New Zealand Ballet'. In the morning visit the New Zealand School of Dance followed by lunch. In the afternoon discover the St James Theatre on a backstage tour before watching company class. Finish with a visit to the costume department and afternoon tea. In the evening see the Royal New Zealand Ballet in their 2010 blockbuster production of Carmen (BL)

SATURDAY 12 JUNE WELLINGTON

Morning exploration of New Zealand's nature, art, history, and cultural heritage on a guided tour of Te Papa, the Museum of New Zealand. Enjoy a farewell lunch with Sue Sweetland. Afternoon at leisure before a concert by the New Zealand Symphony Orchestra at the Michael Fowler Centre.

Program:

Glinka – *Ruslan and Ludmila* overture
Rachmaninov – Piano concerto 3
Glazunov – *The Seasons*.
(B, Farewell lunch)

SUNDAY 13 JUNE DEPART WELLINGTON

Tour arrangements conclude after breakfast. (B)

NEW ZEALAND SYMPHONY ORCHESTRA

The New Zealand Symphony Orchestra, founded in 1946, is the country's leading professional orchestra. It has an establishment of 90 players and performs over 100 concerts annually. Touring within New Zealand looms large in the Orchestra's activities. All its main symphonic programmes are presented in Auckland and Wellington, and as well as this, the Orchestra visits some 25 New Zealand towns and cities annually.

In August 2008 the Orchestra travelled to China to take part in the Beijing Olympic Cultural Festival. During this prestigious tour the NZSO performed at the Forbidden City and the National Centre for the Performing Arts. A subsequent Listener article described this as New Zealand's "other gold".

In 2005 the NZSO undertook a highly successful tour that included performances at the BBC Proms, Amsterdam's Concertgebouw, Snape Maltings in England and the World Expo at Aichi in Japan.

Pietari Inkinen was appointed the NZSO's Music Director from January 2008. He succeeds James Judd who held the position from 1999 to 2007 and is now Music Director Emeritus.

For further information, visit www.nzso.co.nz

THE ROYAL NEW ZEALAND BALLET

The Royal New Zealand Ballet was formed in 1953 by Danish Royal Ballet Principal Dancer Poul Gnatt. The company's early days of touring embodied the New Zealand pioneering spirit. Performing night in night out, company members unloaded and repacked the set, rigged the lights and ironed the costumes, with local community members providing accommodation.

The spirit of those days survives, and the support of the New Zealand public remains. The Royal New Zealand Ballet is seen as an intrinsic part of the country's national heritage, and has the largest following of all New Zealand performing arts companies.

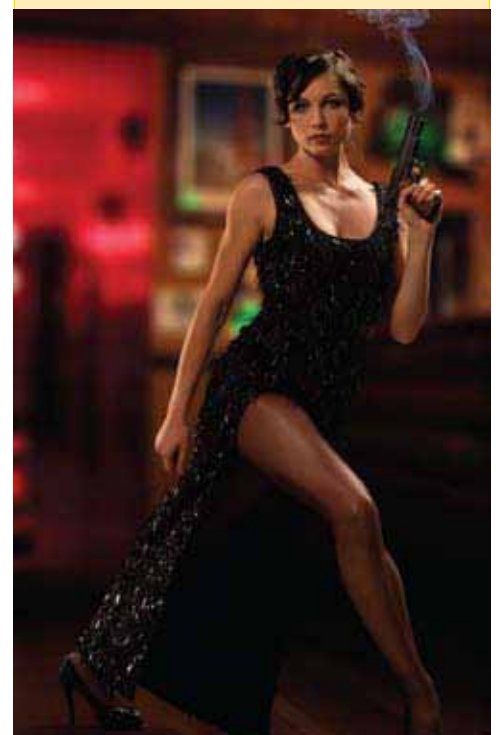
The Royal New Zealand Ballet today has developed a reputation for strong

characterisation in the staging of full-length dramatic works, which became a hallmark in the 1980s. To this base have been added the masterworks and major ballets of the 20th century, such as Balanchine's works and the Stravinsky ballets.

The dancers of the Royal New Zealand Ballet possess a unique physical strength and versatility, and a well developed sense of individuality. New international and New Zealand choreography expresses these qualities and features prominently in the company's repertoire.

In January 1998, the Royal New Zealand Ballet moved to its first ever permanent purpose built premises at Wellington's Westpac St James Theatre (now the St James Theatre).

For further information, visit www.nzballet.org.nz



TOUR CODE: AB10603
DEPOSIT: \$500 per person

TOUR PRICES

Per person, twin-share \$3,950
Single supplement* \$800

*Single travellers may request to share.
Please advise at time of booking.

AIRFARES

Please contact Renaissance Tours for assistance.

TOUR PRICES INCLUDE

- Accommodation in centrally located 4-star hotels with private facilities and daily breakfast (B)
- Meals as per itinerary (L=Lunch, D=Dinner) including a special Welcome Dinner and Farewell Lunch
- A-reserve tickets to 1 ballet performance, 1 Opera performance and 1 Symphony concert
- Comprehensive sightseeing including local guides and entrance fees as per itinerary
- Transportation in deluxe air-conditioned coach
- Comprehensive tour notes
- Gratuities for local guides and drivers
- Porterage (1 piece per person) where available. Airport portorage NOT included

DO NOT INCLUDE

- Transfers on arrival / departure
- Drinks with meals, except Welcome and Farewell Meals
- Items of a personal nature, including telephone, laundry, taxis etc.
- Airport portorage
- Travel insurance

YOUR HOTELS ****

Auckland Rendevoz Hotel
Tairua Grand Mercure Puka Park Resort
Rotorua Duxton Hotel Okawa Bay Resort
Napier The Crown Hotel
Wellington Museum Hotel
NB Hotels of a similar standard may be substituted.

HOW TO BOOK

Complete, sign and return the Booking Form available from Renaissance Tours with your deposit of \$500 per person. Upon receipt of your Booking Form and deposit, you will receive confirmation of your place from Renaissance Tours.

DEPOSIT / FINAL PAYMENTS

Deposit (at time of booking) \$500

Your deposit is used to purchase your performance tickets and is non-refundable in the event of your cancellation. Your final payment is due 60 days before departure. Failure to make your final payment by the due date may result in cancellation of your booking and loss of deposit. We reserve the right to charge a late payment fee in the event of late booking and/or payment to cover additional communication and other expenses.

Payment by cash, cheque, American Express, Diners Club, MasterCard and Visa is accepted.

A 3% service charge applies for payment by American Express and Diners Club.

CANCELLATION AND REFUNDS

You may cancel the booking at any time. Written notification is essential even if verbal notification of an intention to cancel has been given. Cancellation charges will be applied as shown below, calculated from the day written notification is received by Renaissance Tours. In addition to the charges shown below, airlines may impose up to 100% cancellation charges.

60 days or more	forfeit of deposit (includes any flight deposit paid)
59 – 45 days	25% of tour cost
44 – 31 days	50% of tour cost
30 – 15 days	75% of tour cost
Less than 15 days	100% of tour cost

The above cancellation charges include applicable GST.

In addition to the above cancellation charges, the full insurance premium together with any existing administration fees is also payable in the event of a cancellation by the Client. If the reason for cancellation is covered by your insurance policy, you may be able to reclaim these charges.

FORCED CANCELLATIONS

We reserve the right to cancel a tour for any reason (such as failure to reach minimum tour participant numbers). Except for force majeure or the Client's failure to pay the final balance, we will not cancel a tour less than 60 days before departure. Unless the Client fails to pay the final balance, we will return all monies paid, excluding payment for travel insurance and administration fees.

No compensation will be paid in the event of cancellation by Renaissance Tours. A full refund of monies paid for tour costs will be the full extent of our liability. Airlines may impose up to 100% cancellation charges.

TRAVEL INSURANCE

It is recommended that you are covered by travel insurance. You can make your own arrangements or your travel insurance can be

arranged by Renaissance Tours.

If you take out travel insurance, please provide us with a copy of your insurance policy (or details of master policy).

FITNESS AND PARTICIPATION

While our tours do not require a special level of fitness, for the overall benefit of the group, all tour members must possess a moderate level of mobility, including the ability to:

- negotiate airports and railway stations without wheelchair assistance
- use combined shower/bath facilities (it is impossible to guarantee walk-in shower facilities)
- undertake walking tours of 2-3 hours duration, including using stairs, walking over cobblestones and other uneven surfaces
- stand for long periods in museums and other sites
- embark / disembark coaches, trains and other methods of transportation without assistance
- handle your own luggage.

If you (or we) have any doubts about your ability to participate in your chosen tour, you may be required to have a doctor's appraisal. This would require a doctor to read the itinerary of your chosen tour and provide you with a written confirmation of your ability to participate.

TERMS AND CONDITIONS

You can find a copy of the full terms and conditions attached to the Renaissance Tours booking form. They can also be found on our website at: www.renaissancetours.com.au or we would be happy to post you a copy on request.

AUCKLAND CBD | PHOTO KIERAN SCOTT



TOUR ARRANGEMENTS BY



Renaissance
Tours

Level 4, 47 York Street
Sydney NSW 2000
GPO Box 5068, Sydney NSW 2001
Tel: (02) 9299 5801 Fax: (02) 9299 5805
Toll-free: 1300 727 095
ABN 14 069 591 448 Lic. 2TA4526
Email: info@renaisancetours.com.au
www.renaissancetours.com.au